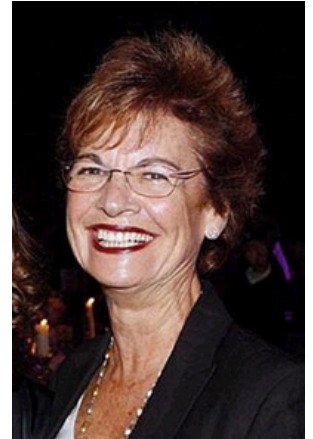


Linda Goldberg

Linda Goldberg was appointed as a Norwood Trustee in May 2010. She has 25 years business management experience in the private and voluntary sector. For 10 years, she was Chief Executive of Cosgrove Care, a voluntary organisation supporting the diverse needs of children and adults with learning disabilities and their families. In 2001, Cosgrove Care gained a National Charity Award in 2001 for excellence in change management.

Originally from Glasgow, Linda began her career as a primary school teacher. On moving to London in 2005, she was engaged in research for Interlink and consultancy with Ezer Leyoldos. She is now a director of a Jewish learning disabilities charity, Netbuddy, and since 2007 has been an advisor to the Judith Trust Board, with the particular remit of inclusion for Jewish people with learning disabilities within the Jewish religious and communal world.

Linda and her husband Mark have three children and eight grandchildren and try and spend a few months of the year in Australia, where one of her sons lives. She enjoys listening to music, theatre, art and walking.



©2012 Norwood

Norwood Ravenswood is a company limited by guarantee registered in England and Wales under no. 3263519 and registered as a Charity no. 1059050. Registered office:
Broadway House, 80-82 The Broadway, Stanmore HA7 4HB